

CANTERBURY COURT CONDOMINIUMS



Canterbury Court, LLC was formed by the owners of Northland Development Company for the redevelopment of land at 2105–2233 W. Mill Road in Glendale. Northland, a Milwaukee-based company, which has been in existence since 1961, has developed many residential and commercial sites around Milwaukee. Northland currently manages \$40 million worth of real estate in the Milwaukee area.

In June of 2008, the City of Glendale unanimously approved the rezoning of the seven acres from light industrial to residential. Phase One will include two buildings, each featuring eight condominium units along Mill Road.

Dianne Dietz-Artmann
414/587-8560

ddietz@shorewest.com

canterburycourtcondos.com

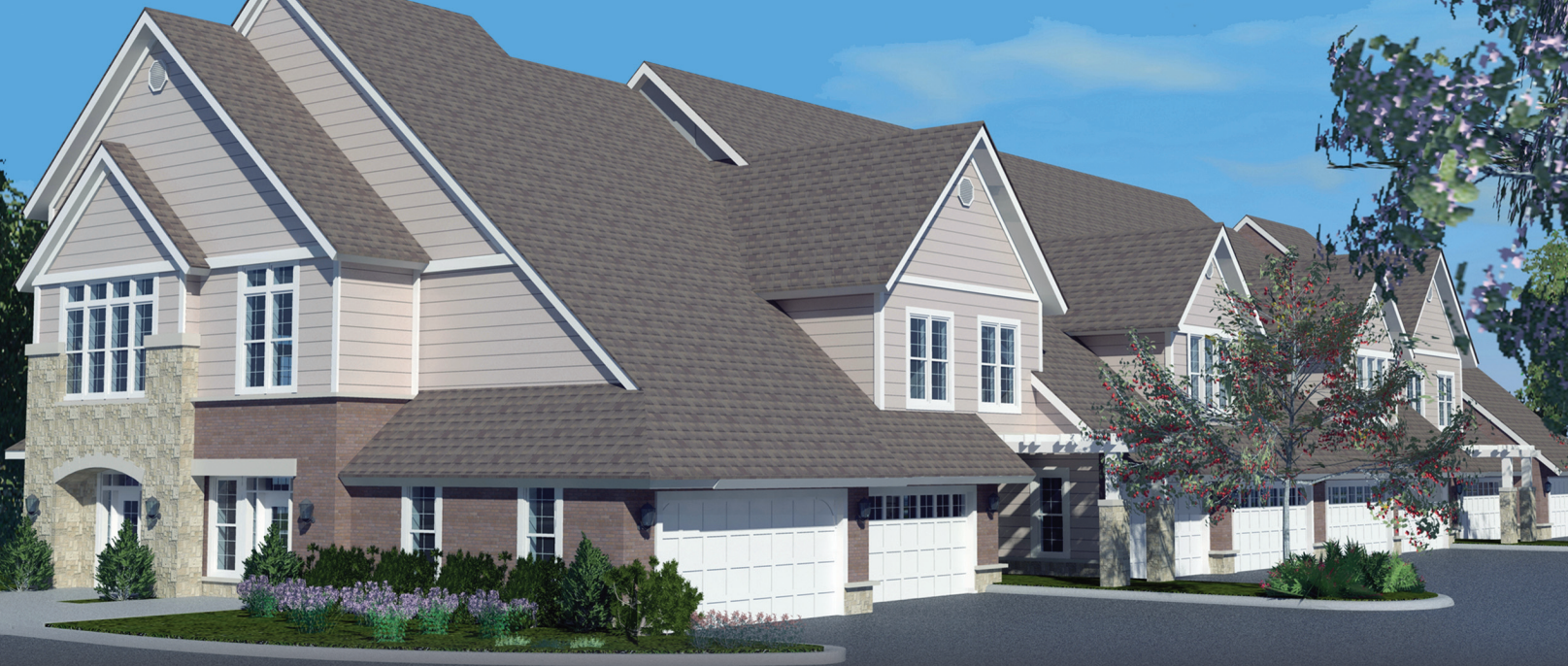
Hotline 262/814-1400 + PIN 87953

©2008 Shorewest, REALTORS® NS4843-11/2008 EHO

ShoreWEST
REALTORS®

Wisconsin's Largest Home Seller™
shorewest.com

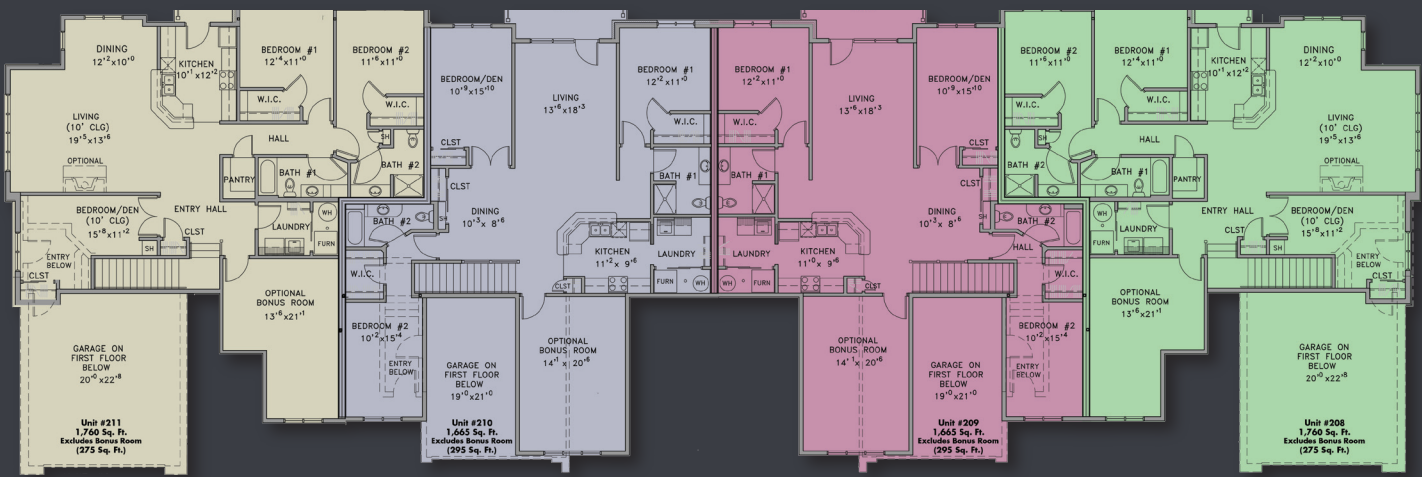




Canterbury Court will feature 58 total units with the first eight units being built at 2155 W. Mill Road. Units will feature two-to-three bedrooms, two baths, balconies or patios, private entries, solid-surface countertops and appliances (including washer and dryer) plus private attached two-car garages. These pet-friendly units will be priced from \$214,900. Completion of the first group is estimated for Spring 2009.



First Floor



Second Floor

Prices and specs subject to change without notice. Actual plans and dimensions may vary.