

2011 PRESIDENT'S CLUB



Jim Schleif, NS
\$22 Million



Maureen Stallé, NS
\$16.5 Million



Andrew Uhl, NB
\$14.9 Million



Jack H. Smith, DT
\$13.8 Million



Renata Greeley, BL
\$12.9 Million



Mary Gilbank-Peterson, JA
\$12.3 Million



Sharon J. Tomlinson, LC
\$12.1 Million



Oneida Wheeler, DV
\$11 Million



Paula J. Schmelzer, LC
\$10.9 Million



Jim Young, NS
\$10.4 Million



Mike Quinlevan, MQ
\$10.3 Million



Barbara Young, MQ
\$10.1 Million



Jay R. Baumgartner, NB
\$10 Million



Heather L. Winsor, NB
\$9.9 Million



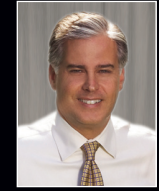
Sally K. Dirk, BW
\$9.5 Million



Kathy Cox, EW
\$9.5 Million



Meg Fox, EW
\$9.5 Million



Glenn E. Hannon, LC
\$9.3 Million



Kimberly Dove, WW
\$9.2 Million



Jeremy Rynders, NB
\$9.1 Million



Reneé L. Koepsel, MU
\$9 Million



Beth Jaworski, EW
\$8.8 Million



Pat Schmidt, EW
\$8.5 Million



Essam Elsafy, NS
\$8.5 Million



Mary Steinke, LC
\$8.2 Million



John Terry Mulcahy, MQ
\$8 Million



Cheryl L. Gehringer, BW
\$7.8 Million



James M. McCallum, LC
\$7.7 Million



Nancy B. Meeks, NS
\$7.7 Million



Kelly Kruger, WW
\$7.7 Million



Mo Quinlevan, MQ
\$7.6 Million



Paula Langlois-Noack, BW
\$7.4 Million



Ilissa R. Boland, NS
\$7.4 Million



Dawn E. Trombley, SS
\$7.2 Million



Joe Sorensen, MQ
\$7.1 Million



Kate Kenlay, NS
\$7.1 Million



Christine L. Rohr-Caponigro, EW
\$7 Million



Kathy Wolf, MF
\$7 Million



Pat Tasker, MF
\$7 Million



Diane Krause, LG
\$6.9 Million



Tammy Cherry, JA
68.8 Units

SALES TEAMS



The Bitterberg Group, BW
\$47.2 Million
Mark Patton[▲], James Riccaboni,
Pat Bitterberg[▲] & Steve Bauman[▲]*



The Roth Team, NB
\$32.2 Million
Front: Mike Roth[▲], Sandy Roth & Brad Kasian
Back: Sue Sprifke, Allen Roth & Sharon Van Winkle



Father/Daughter Team, RA
\$14.4 Million
Jim Smith & Amy Karegeannes[▲]



The Kuchtas — Kelly & Colleen, MF
\$11.2 Million
Kelly Kuchta & Colleen Kuchta[▲]*



The Kochs — Mickey & Sarah, MF
\$10.7 Million
Mickey Koch & Sarah Koch[▲]



The Larson Team, WW
\$10 Million
Sherry Larson[▲] & Stephanie Larson

2011 EXECUTIVE CLUB



Leslie S. Bley*,
LC
\$6.8 Million



Bonnie J.
Dominski, SR
\$6.8 Million



Ann M.
Lebiecki, MF
\$6.6 Million



Kevin Nash, MF
\$6.4 Million



Peggy L.
Anderson, CE
\$6.3 Million



Sherry
Wittemann, BW
\$6.3 Million



Jerry Plato, NS
\$6.2 Million



Gene Goldsby,
NB
\$6.1 Million



Donna Best, EW
\$6 Million



Paula A. White,
LC
\$6 Million



Lauri Burkard,
DT
\$5.9 Million



Carol L. Delie,
LC
\$5.9 Million



Susan M.
Derby, WW
\$5.8 Million



Terri A.
Newman, MF
\$5.8 Million



Rick Fedor, BW
\$5.7 Million



Rob Wood*,
EW
\$5.7 Million



Patti Potos, NS
\$5.5 Million



Karen Joost
Henry, BW
\$5.3 Million



Karen M. Wertz,
MQ
\$5.3 Million



Dina J. Bissett-
Miller, MQ
\$5.2 Million



Tory Bruce*,
MQ
\$5.2 Million



Millie P.
Jovic, SR
\$5.1 Million



Tom Martin,
MQ
\$5.1 Million



Donna M.
Schoessow, SR
\$5.1 Million



Sally Ward, CE
\$5.1 Million



Mike
Kollmansberger, WW
\$5 Million



Yvonne G.
Myszka, LC
\$5 Million



Daniel L. Weber,
WB
\$5 Million



Andrew D.
Dean, SR
\$4.9 Million



Carolyn A.
Ingham, MF
\$4.9 Million



Rebecca
Sprague, LC
\$4.9 Million



James R.
Desmond, MQ
\$4.8 Million



Pete Picciolo*,
BW
\$4.8 Million



Sandra E.
Carlson, BL
\$4.7 Million



Terry P. Inman,
BW
\$4.6 Million



Margaret T.
Nichols, MU
\$4.6 Million



Rock Picciolo*,
BW
\$4.6 Million



Ann Braasch,
WT
\$4.5 Million



Wendy F.
Bruner, BW
\$4.5 Million



Brian
Hollenbeck, WT
\$4.5 Million



Al Luedtke*,
WB
\$4.5 Million



Bonnie
Malcore, BW
\$4.5 Million



Paula
McPherson, WT
\$4.5 Million



Steve
Wiedenfeld, SR
\$4.5 Million



Steve
Willicombe, LC
\$4.5 Million



Ty Jakoblich,
WW
\$4.4 Million



Shawn Roth, LC
\$4.4 Million



Toni Spott, DT
\$4.4 Million



Xochitl R.
Driscoll, BW
36 Units



Gerald Katz*,
EW
40 Units

SALES TEAMS



Rachel Flores,
SR
39.85 Units



Weske/Severson Team, WB
\$13.5 Million
Mark Weske, Patti Weske*,
Werner Zeitler, Carole Severson*
& Al Severson



The Bronk-Hughes Team, MU
\$10.4 Million
Jenny Bronk* & Marci Hughes*



Alteri-Weber Alliance, BW
\$8.6 Million
Al Alteri*, Sue Horn
& Gary Weber*

ShoreWEST
REALTORS™

Wisconsin's Largest Home Seller™
shorewest.com